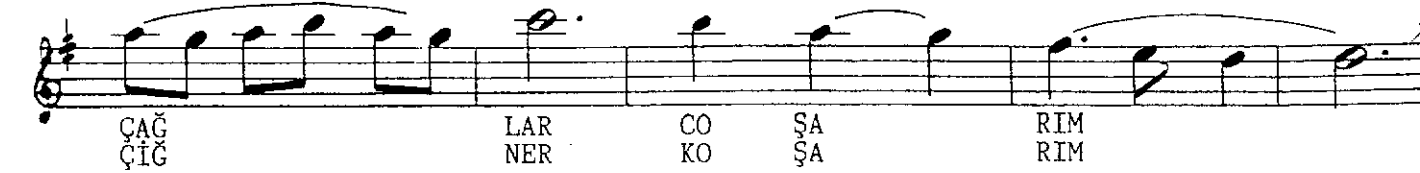
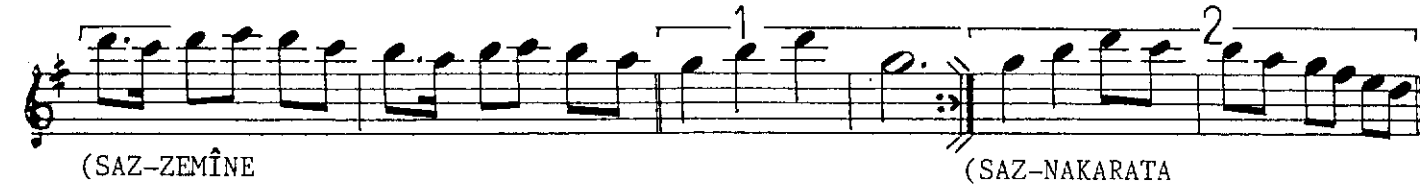
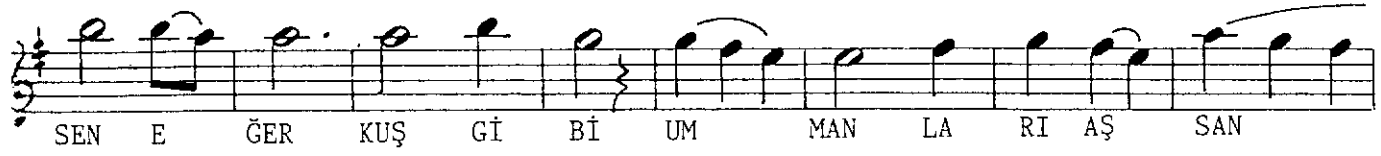
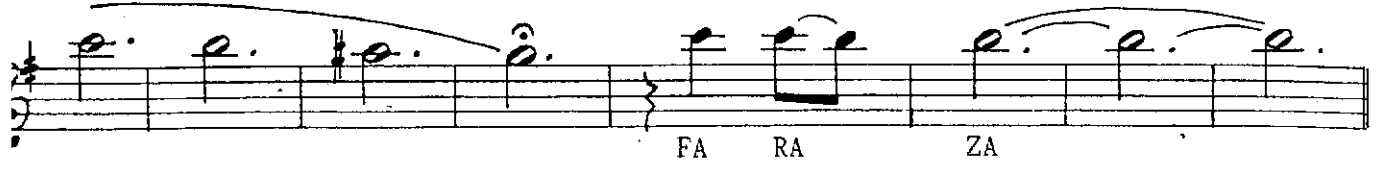


S E M Â İ

M Â H Ū R
Görmeyim kimseye (KISKANÇ)

Beste: Alâeddin YAVAŞÇA

Güfte: Rahmi DUMAN
27.08.1965/HARBİYE



GÖRMEYİM KİMSEYE GÖZ SÜZDÜĞÜNÜ MAHVOLURUM

SONRA BİR ANDA NEHİRLER GİBİ ÇAĞLAR COŞARIM

SEN EĞER KUŞ GİBİ UMMÂNLARI AŞSAN FARAZÂ

BEN DE RÜZGÂR GİBİ İKLİMLERİ ÇİĞNER KOŞARIM